

【TY170系列产品介绍】

- IEC950 插座一体化滤波器;
Integrated IEC950 connect filter
- 附带两个保险管(φ5*20mm)以及开关,安全可靠;
Attached double fuses and switch ensured the safety and reliability
- 采用高品质元件,性价比高。
Using high quality components, provided high ratio of performance to cost make
- 接受定制,提供医疗设备专用低漏电流型号。
Supply special low leakage current for medical devices, and accept custom design filters



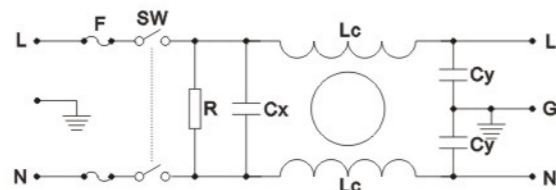
Specification

(规格表)

滤波器型号	端接方式	额定电流	额定电压	工作频率	耐压等级	绝缘电阻	工作温度	最大漏电流
PART No	Connection IN OUT	Rated current	Rated voltage	Line frequency	Hipot test Voltage	Insulation Resistance	Temperature Range	Max leakage current
TY170C-1		1A	120/250VAC	50/60Hz	线-线(L-L): 1450VDC/1Min 线-地(L-G): 2000VAC/1Min	线-地(L-G): ≥100MΩ @500VDC	25/085/21	0.3mA
TY170C-3		3A						0.3mA
TY170C-6		6A						0.3mA
TY170C-10		10A						0.3mA
TY172C-1		1A	120/250VAC	50/60Hz	线-线(L-L): 1450VDC/1Min 线-地(L-G): 2000VAC/1Min	线-地(L-G): ≥100MΩ @500VDC	25/085/21	0.3mA
TY172C-3		3A						0.3mA
TY172C-6		6A						0.3mA
TY172C-10		10A						0.3mA
TY176C-1		1A	120/250VAC	50/60Hz	线-线(L-L): 1450VDC/1Min 线-地(L-G): 2000VAC/1Min	线-地(L-G): ≥100MΩ @500VDC	25/085/21	0.3mA
TY176C-3		3A						0.3mA
TY176C-6		6A						0.3mA
TY176C-10		10A						0.3mA

Schematic

电气原理图



Insertion Loss

Tested @ 50 ohm system as IEC/CISPR :17

滤波器型号	共模衰减 (Comm.Mode) -in Mhz						差模衰减 (Diff.Mode) -in Mhz					
	0.15	0.5	1.0	5.0	10	30	0.15	0.5	1.0	5.0	10	30
TY170C-1	28	39	41	37	38	23	8	19	28	42	42	28
TY170C-3	21	28	33	38	39	48	11	21	23	43	45	47
TY170C-6	13	22	28	44	46	49	6	16	21	41	44	37
TY170C-10	6	15	21	33	39	38	5	14	20	44	44	40
TY172C-1	28	39	41	37	38	23	8	19	28	42	42	28
TY172C-3	21	28	33	38	39	48	11	21	23	43	45	47
TY172C-6	13	22	28	44	46	49	6	16	21	41	44	37
TY172C-10	6	15	21	33	39	38	5	14	20	44	44	40
TY176C-1	28	39	41	37	38	23	8	19	28	42	42	28
TY176C-3	21	28	33	38	39	48	11	21	23	43	45	47
TY176C-6	13	22	28	44	46	49	6	16	21	41	44	37
TY176C-10	6	15	21	33	39	38	5	14	20	44	44	40

Mechanical Specs

(安装尺寸图)

单位(Unit): mm

