

【TY368 系列产品介绍】

- 在150KHz-30MHz的频段具备优异的衰减性能；
Exceptional attenuation performance from 150KHz to 30MHz
- 结构紧凑，安装简单；
Most compact and easy to mount
- 采用高品质元件，安全可靠。
High quality component ensure the safety and reliability of filters
- 广泛用于各种工业噪声环境。
Available for industrial noise environments

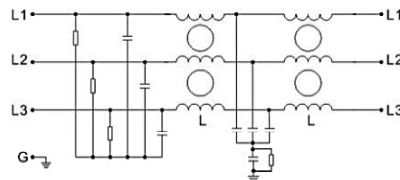


Specification (规格表)

滤波器型号	端接方式	额定电流	额定电压	工作频率	耐压等级	工作温度	最大漏电流	尺寸图
PART No	Connection IN OUT	Rated current @50°C	Rated voltage	Line frequency	Hipot test Voltage	Temperature Range	Max leakage current	Pic
TY368T-8		8A	275/480VAC	50/60Hz	线-线(L-L): 1450VDC/1Min 线-地(L-G): 2700VDC/5S	25/100/21	≤33mA	FIG1
TY368T-16		16A					≤33mA	FIG2
TY368T-30		30A					≤33mA	FIG3
TY368T-42		42A					≤33mA	FIG4
TY368T-55		55A					≤33mA	FIG5
TY368T-75		75A					≤33mA	FIG6
TY368T-100		100A					≤33mA	FIG6
TY368T-130		130A					≤33mA	FIG7
TY368T-180		180A	≤33mA	FIG8				

■ 表中漏电流是指正常状态下的最大值，如缺两相，漏电流将是此值的6-8倍。
Max.leakage under normal circumstances.Note:if two phase are interrupted,worst case leakage could reach 6-8 times higher levels.

Schematic 电气原理图



Insertion Loss

Tested@50 ohm system as IEC/CISPR :17

滤波器型号	共模衰减 (Comm.Mode) -in Mhz						差模衰减 (Diff.Mode) -in Mhz					
	0.15	0.5	1.0	5.0	10	30	0.15	0.5	1.0	5.0	10	30
PART number	0.15	0.5	1.0	5.0	10	30	0.15	0.5	1.0	5.0	10	30
TY368T-8	65	76	76	60	44	22	50	55	75	69	65	54
TY368T-16	70	75	74	58	42	30	55	76	74	72	70	55
TY368T-30	71	76	75	56	42	30	53	72	65	54	50	40
TY368T-42	66	75	73	58	42	27	55	75	73	72	70	58
TY368T-55	70	76	68	48	36	22	53	74	63	50	47	35
TY368T-75	58	70	62	47	37	22	60	65	59	46	41	31
TY368T-100	67	73	68	56	32	20	66	67	58	57	43	33
TY368T-130	53	72	61	55	32	22	55	68	57	56	41	34
TY368T-180	55	68	57	42	33	21	56	56	48	38	34	27

Mechanical Specs (安装尺寸图)

单位(Unit): mm

