

【产品介绍】

- 具有良好的宽频带干扰抑制性能;
With a high insertion loss from KHZ up to GHZ region.
- 适用于各种电子设备, 如电源、通讯、UPS、医疗等;
Application for switch power supply, telecom, ups, medical equipment.



Specification

(规格表)

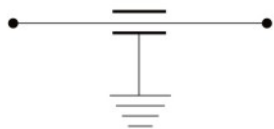
滤波器型号	端接方式	额定电流	额定电压	高压测试	工作温度	绝缘电阻	电容容量	尺寸图
PART No	Connection IN OUT	Rated current	Rated voltage	Hipot test Voltage	Temperature Range(°C)	Insulation Resistance	Capacitance	Pic
TY710P-3		3A	120/250VAC 50/60Hz or 600VDC	线-地(L-G): 1500VDC/2S	-40~+85°C	线-地(L-G): ≥100MΩ @500VDC	1~4.7nF	Fig 2
TY710P-6		6A					1~4.7nF	Fig 2
TY710P-10		10A	100VDC	线-地(L-G): 400VDC/2S	-40~+85°C	线-地(L-G): ≥1500MΩ @100VDC	1~4.7nF	Fig 2
TY710M-16	≡ ≡	16A					10~100nF	Fig 3
TY710M-32	≡ ≡	32A					10~220nF	Fig 3
TY710M-63	≡ ≡	63A					10~470nF	Fig 4
TY710M-100	≡ ≡	100A					22~2200nF	Fig 5
TY710M-200	≡ ≡	200A					22~2200nF	Fig 6
TY720M-30	≡ ≡	30A	10~100nF	Fig 7				
TY720M-75	≡ ≡	75A						10~100nF
TY730P-3		3A	100VDC	线-地(L-G): 400VDC/2S	-40~+85°C	线-地(L-G): ≥1500MΩ @100VDC	1~6.8nF	Fig 1
TY730P-5		5A					1~6.8nF	Fig 1
TY730M-16	≡ ≡	16A					10~100nF	Fig 3
TY730M-32	≡ ≡	32A					10~220nF	Fig 3
TY730M-63	≡ ≡	63A					10~470nF	Fig 4
TY730M-100	≡ ≡	100A					22~2200nF	Fig 5
TY730M-200	≡ ≡	200A	22~2200nF	Fig 6				

备注: 以上规格为公司标准品, 也可以按客户要求定制开发。

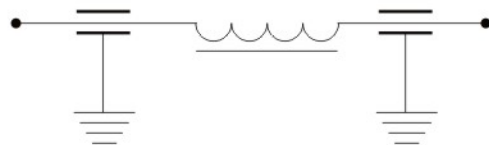
Schematic

电气原理图

C型电路(TY710/730)



π型电路(TY720/740)



Mechanical Specs

(安装尺寸图)

单位(Unit): mm

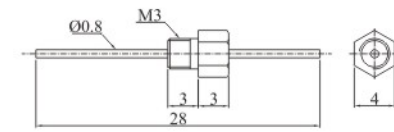


Fig1

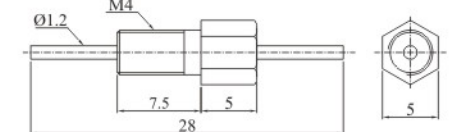


Fig2

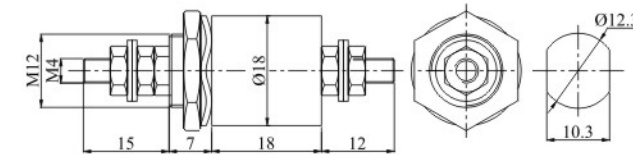


Fig3

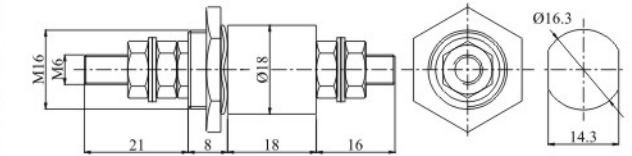


Fig4

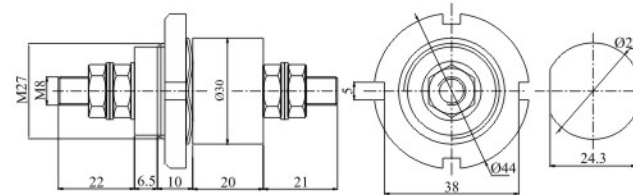


Fig5

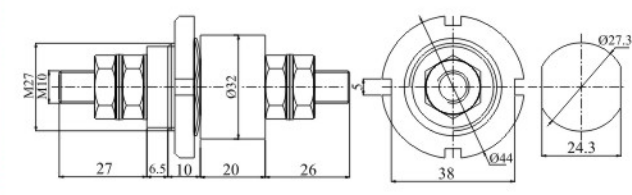


Fig6

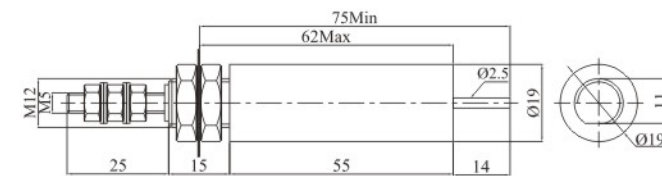


Fig7

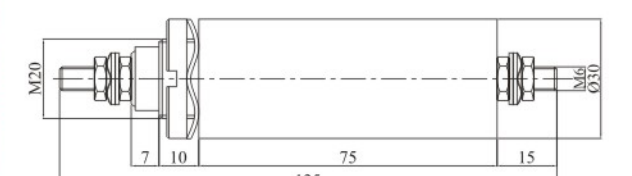


Fig8

Insertion Loss(dB)

Typical values @ 50 ohm system

频率 / 电容容量	10Khz	100Khz	1Mhz	10Mhz	100Mhz	≥300Mhz
1000pF	--	--	--	4	23	>30
2200pF	--	--	--	8	26	>30
3300pF	--	--	--	10	28	>35
4700pF	--	--	--	12	30	>35
22nF	--	--	8	30	50	>70
47nF	--	1	16	36	50	>75
100nF	--	5	20	40	55	>80
220nF	--	8	30	40	65	>80
470nF	2	15	35	40	80	>85
1000nF	5	25	42	48	80	>85
4700nF	15	35	50	65	85	>85